

98010: Proportional Solenoid Actuator

Description:

This actuator is an example of a direct acting continuously variable solenoid that can be designed to operate over various ranges of stroke and force.

Features:

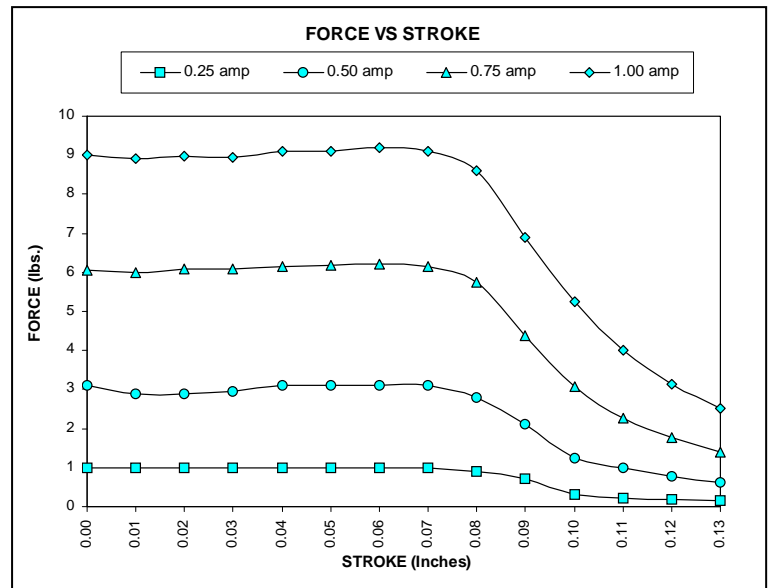
- Low cost
- Compact design
- Fast response
- Can be optimized for specific force / stroke curves to optimize controllability
- Can be optimized to configure with customer electronic drivers



Proportional Solenoid Actuator

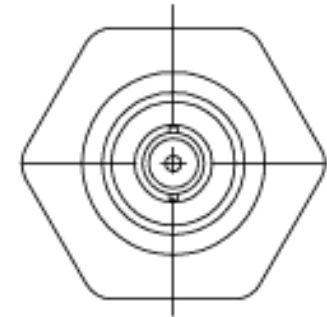
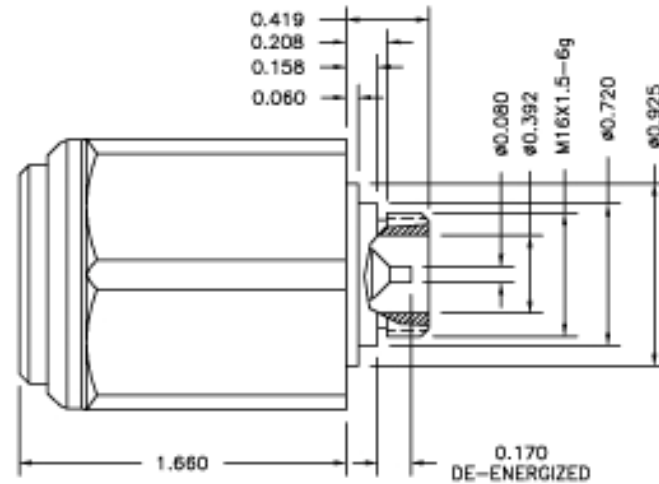
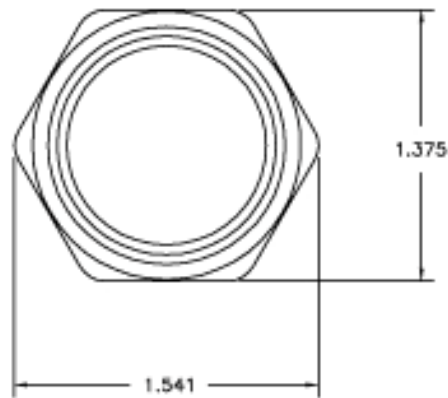
Specifications: English

Duty cycle (%ED)	100 %
Voltage	12 or 24 VDC
Dither frequency	100 to 500 Hz
Stroke	0.130 inch
Force hysteresis	< 5 %
Nominal linearity	< 2 %
Insulation class	H (180 °C)
Connector type	Flying leads



Possible applications:

- Direct acting actuator
- Throttle position control
- EGR control
- Turbo charger control
- Hydraulic cartridge valves
- Hydraulic control valves
- Transmission clutch control
- Transmission control valves
- Industrial controls
- Machine controls
- Other



SPECIFICATIONS			
Material:		STANDARD DIMENSIONAL TERMS ARE: DIMENSIONS IN () ARE IN mm ANGULAR DIMENSIONS ARE ± 1° - 1 DECIMAL POINT (0) IS ± .020 2 DECIMAL POINT (00) IS ± .008 3 DECIMAL POINT (000) IS ± .005 4 DECIMAL POINT (0000) IS ± .0001 - G.D & T PER ANSI 14.5M - <input checked="" type="checkbox"/> UNLESS SPECIFIED	THIS PRINT AND THE INFORMATION THEREIN IS CONFIDENTIAL AND PROPRIETARY AND IS THE PROPERTY OF TLX Technologies. IT IS NOT TO BE COPIED OR REPRODUCED WITHOUT WRITTEN PERMISSION OF TLX Technologies.
Heat Treat:			Description PROPORTIONAL SOLENOID
Remove All Burrs.		DRG SIZE SCALE DO NOT SCALE FROM DRAWING A 1:1	Drawing Number 98010-WEB
CAD File No.	98010-WEB	Drawn By: Dwg By:	Drawn Date: Dwg Date: