

## Manual Reset Latching Solenoid

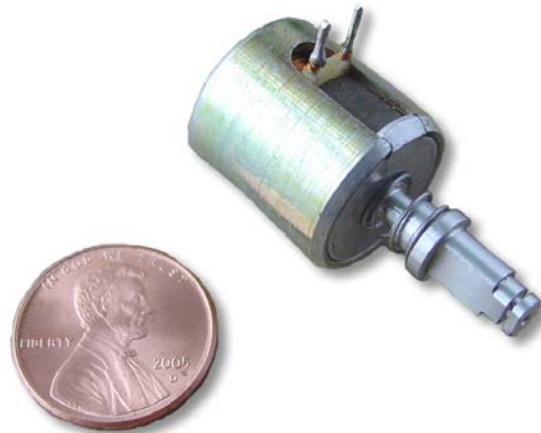
(Reference #00029)

### Description:

The solenoid is manually actuated from the de-latched to the latched position. Once in the latched position, a permanent magnet field is used to hold the solenoid in the latched state. The solenoid is returned to the de-latched position by applying a short voltage or current pulse that cancels the permanent magnet field. Strokes and forces are flexible depending upon solenoid size.

### Features:

- Compact design
- High latching forces
- Fast response
- Low power consumption
- Can be optimized for specific load holding capability
- Can be optimized to configure with customer power requirements



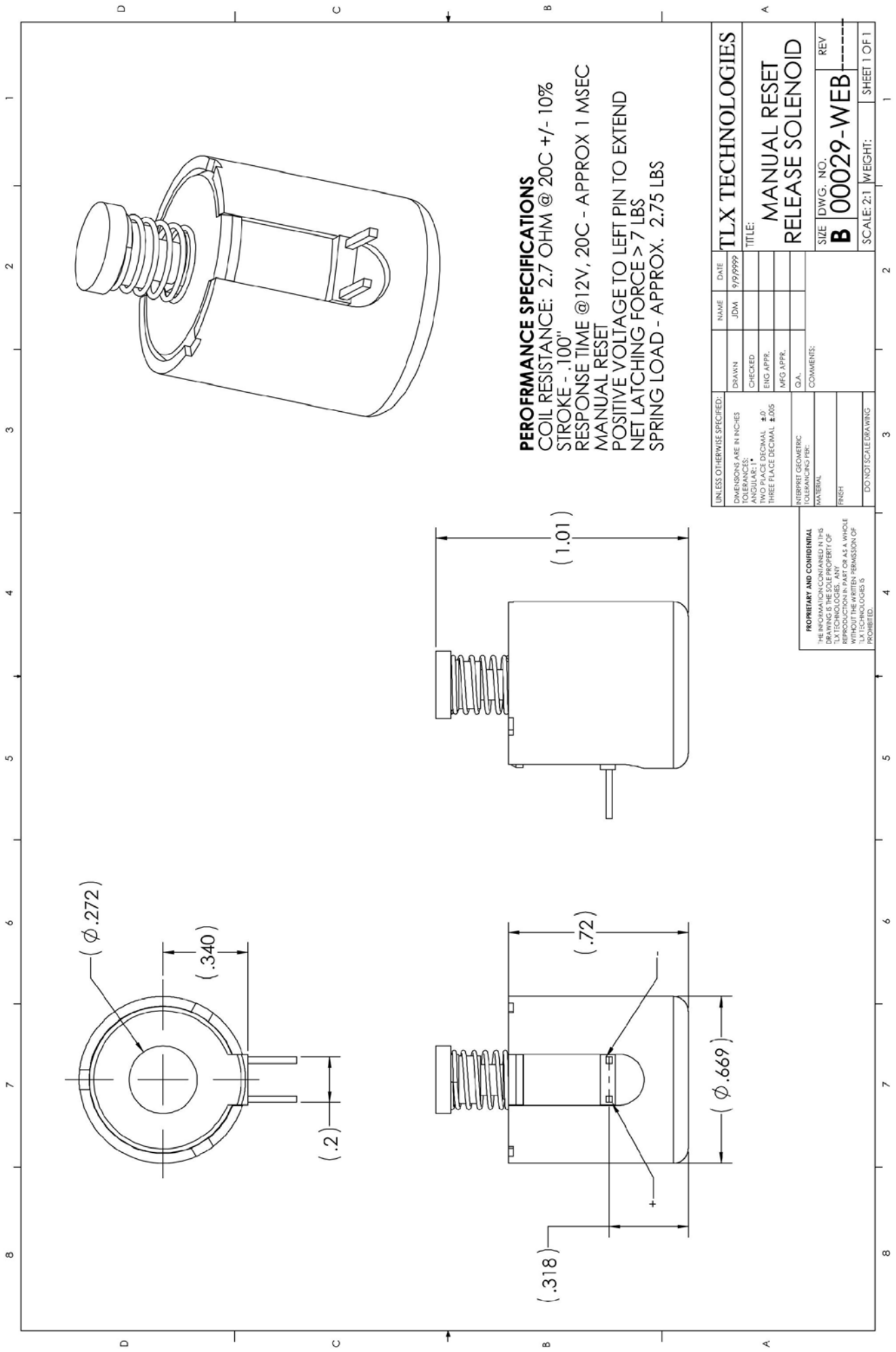
### Specifications:

**English** (metric as applies)

Stroke (can be designed to specification)	.125 in (3.2 mm)
Net Latching Force (approx. for size shown)	7.0 lbs (31 N)
Supply Voltage	12 Vdc
Response Time	Approx. 1 ms
Resistance at 20°C	2.7 $\Omega$ $\pm$ 10%
Spring Load	10 lbs (44.5 N) max
Static Side Load	Approx. 2.75 lbs (12.25 N)
Current	4.4 amps

### Possible applications:

- Air bag vents
- Battery disconnects
- Truck release systems
- Vehicle door locks
- Battery operated locks
- Vending equipment
- Medical supply cabinets
- Other



**PERFORMANCE SPECIFICATIONS**  
 COIL RESISTANCE: 2.7 OHM @ 20C +/- 10%  
 STROKE - .100"  
 RESPONSE TIME @ 12V, 20C - APPROX 1 MSEC  
 MANUAL RESET  
 POSITIVE VOLTAGE TO LEFT PIN TO EXTEND  
 NET LATCHING FORCE > 7 LBS  
 SPRING LOAD - APPROX. 2.75 LBS

UNLESS OTHERWISE SPECIFIED: DIMENSIONS ARE IN INCHES TOLERANCES: ANGULAR: ± .01 HOLE POSITION: ± .01 THREE PLACE DECIMAL ± .005		NAME JDM	DATE 9/9/9999
INTERPRET GEOMETRIC TOLERANCING PER MATERIAL FINISH DO NOT SCALE DRAWING		CHECKED	Q.A.
PROPRIETARY AND CONFIDENTIAL THE INFORMATION CONTAINED IN THIS DRAWING IS THE SOLE PROPERTY OF TLX TECHNOLOGIES. ANY REPRODUCTION IN PART OR AS A WHOLE WITHOUT THE WRITTEN PERMISSION OF TLX TECHNOLOGIES IS PROHIBITED.		ENG APPR.	COMMENTS:
MFG APPR.		TITLE: <b>MANUAL RESET RELEASE SOLENOID</b>	
SIZE <b>B</b>		IDWG. NO. <b>00029-WEB</b>	REV
SCALE: 2:1		WEIGHT:	SHEET 1 OF 1

**TLX TECHNOLOGIES**